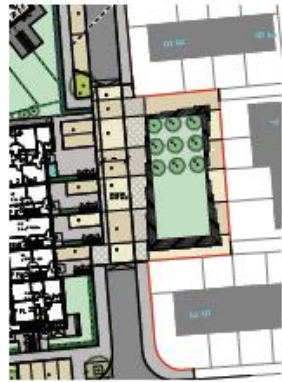


Parks

Phases 1 and 2 of the Fraser Avenue masterplan include provision for a large park at the centre of the site as well as a number of smaller 'pocket' parks. These parks can be used to provide play space for children as well as recreation and seating for people of all ages. The design detail and use will be determined through consultation with the local community with final proposals being subject to funding availability.



Landscaped areas on Hillend Road, Phase 1



Pocket park, Phase 1



Pocket park, Phase 2



Central park area, Phase 2



Site plan showing Phases 1 and 2

Central Park

The central park is the largest green space within the development and will feature a robust 'playscape' utilising landforms to negotiate levels and to provide active play off opportunities. This can be supplemented with additional play equipment. The examples shown below are to help generate discussion and feedback from the community on what they would like to see provided in the new housing development.



View of central park from the north



View of central park from the south

Artwork

It is proposed that artwork is incorporated throughout the development by tracking the route of the Halbeath Railway that once ran across the site, using specially adapted surfaces and lettering. The intention is to create a context specific piece of art to commemorate the history of the local area.



Aerial view of the proposed Fraser Avenue masterplan

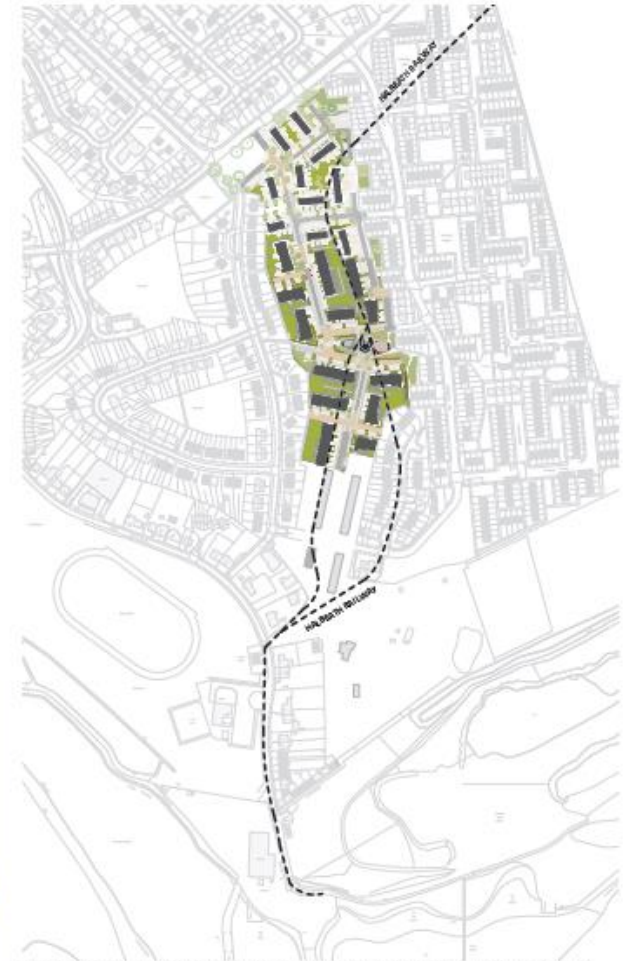


Diagram showing the route of the former Halbeath railway overlaid on the proposed Fraser Avenue scheme.



1928 map of Inverkeithing showing the route of the former Halbeath railway through the Fraser Avenue site.