



Project Information

KINGDOM
Housing Association



Wilmington Drive, Glenrothes

BACKGROUND – Wilmington Drive, Glenrothes

The site is located on the northern outskirts of Glenrothes, one of Fife's principal centres. The new properties form part of a wider established residential scheme adjacent to an existing large children's play area.

The project started on site in March 2020 and provides 6 new homes for Social Rent and 2 new homes to support the needs of the local community. The units were completed in May 2021 and were transferred to Glen Housing Association on completion.

The development provided a mix of one bedroom cottage flats and three bedroom bungalows, both detached and semi detached.

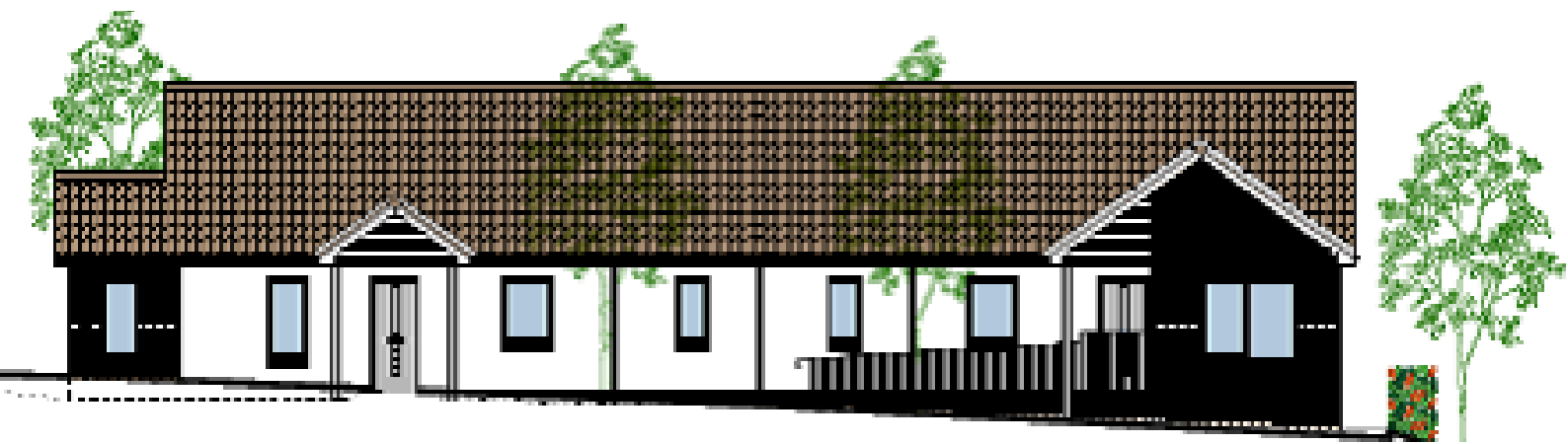
The properties were designed to meet Housing for Varying Needs, Secured by Design, KHA's Design Standard and Scottish Government's Greener Standards Specification (the properties have achieved full Bronze and Silver Level 1 & 2 Standards).

8
Units

Total Bedspaces 26

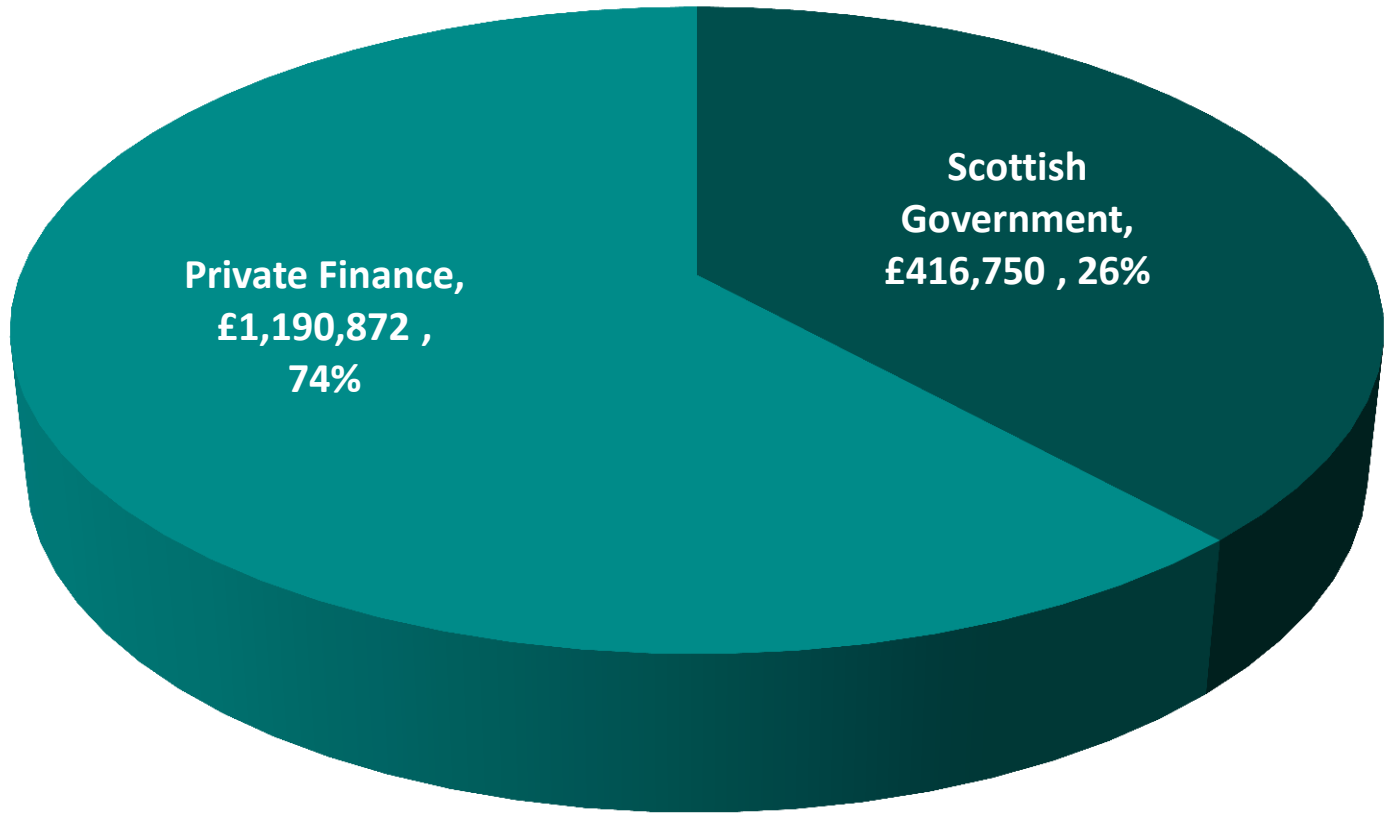
1 Bed, 2 Person Cottage Flats (General Needs) Social Rent	5
3 bed, 5 person Semi Detached Bungalow	2
3 Bed, 6 Person Bungalow (Wheelchair) Social Rent	1

Landlord
Glen Housing Association



Funding & Costs

Total Funding £1,607,622



		Per Unit	Total
Project Costs		£200,953	£1,607,622
Works Cost		£177,910	£1,423,283
Rents at First Allocation (19/20 rates)		£260 - £390 pcm (est.)	



Points to Note

- **Sustainability** - Building Control full Bronze and Silver Level 1 &2 Standards have been achieved.
- **Energy Rating** - An Energy Rating of B (81-91) have been achieved.
- **Community Benefits** - Delivered in line with agreed targets
- The project has achieved **Secured by Design** accreditation.

Construction Period	March 2020 – May 2021
Contract Type	Negotiated Design & Build Contract
Contractor	Campion Homes
Architect	Sinclair Watt
Employers Agent	John Duguid Partnership
Engineer	Curtins
Principle Designer	John Duguid Partnership

